



Postbus 17
 7480 AA Haaksbergen
 E-mail: ihb@ihbinternational.nl
 Web: www.ihbinternational.nl

Tel. + 31 (0)53 57 431 43
 Mob. + 31 (0)63 01 548 26
 Fax + 31 (0)84 87 266 72

BTW nr. 1014.51.556.B.02

REEL

€	-	prijs per stuk / each		
€	-	totaalprijs / total amount	prijs / price	
code 1751-1			excl.	TRANSPORT / BTW / VAT/as is where is
Omschrijving/description	CAT A	NOR		

We have the following reel available for immediate supply
 suitable for power hub drivers according to offshore standards,

Main characteristics reel:

Drum diameter: 10m, rim diameter: 12.5m, width: 5m,

300 ton rated and certified, Lloyd's approved design certificate, Including
 dolly base and transport cradles, excluding drivers, center hub with three
 dogs. Year 1999 by SE marine ltd

FULL DOCUMENTATION AVAILABLE





Postbus 17
7480 AA Haaksbergen
E-mail: ihb@ihbinternational.nl
Web: www.ihbinternational.nl

Tel. + 31 (0)53 57 431 43
Mob. + 31 (0)63 01 548 26
Fax + 31 (0)84 87 266 72

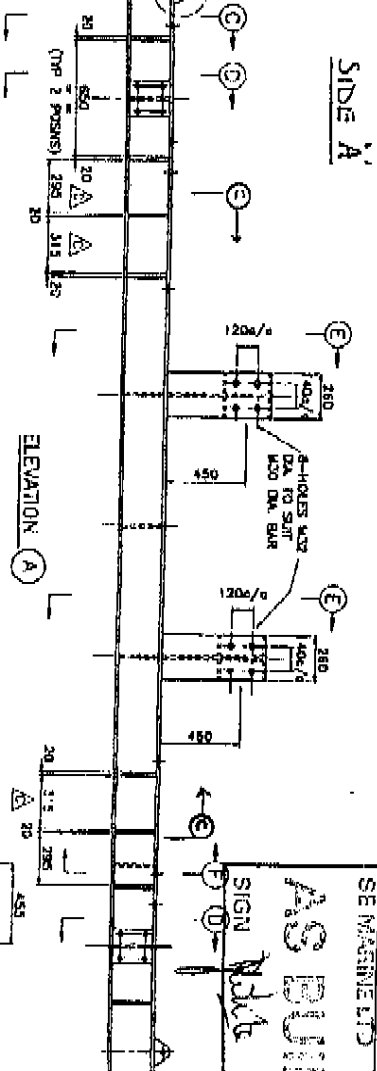
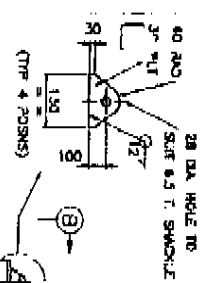
BTW nr. 1014.51.556.B.02

Index of the available reel documentation

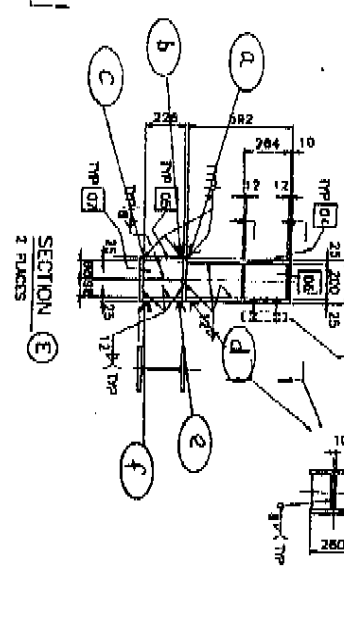
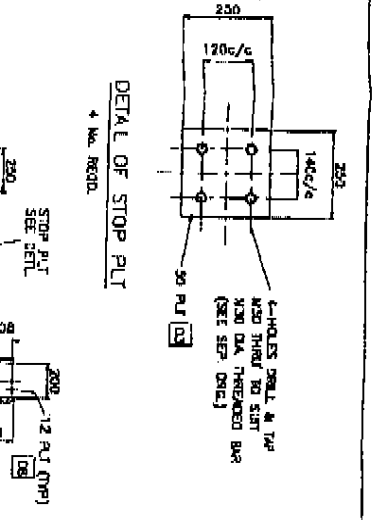
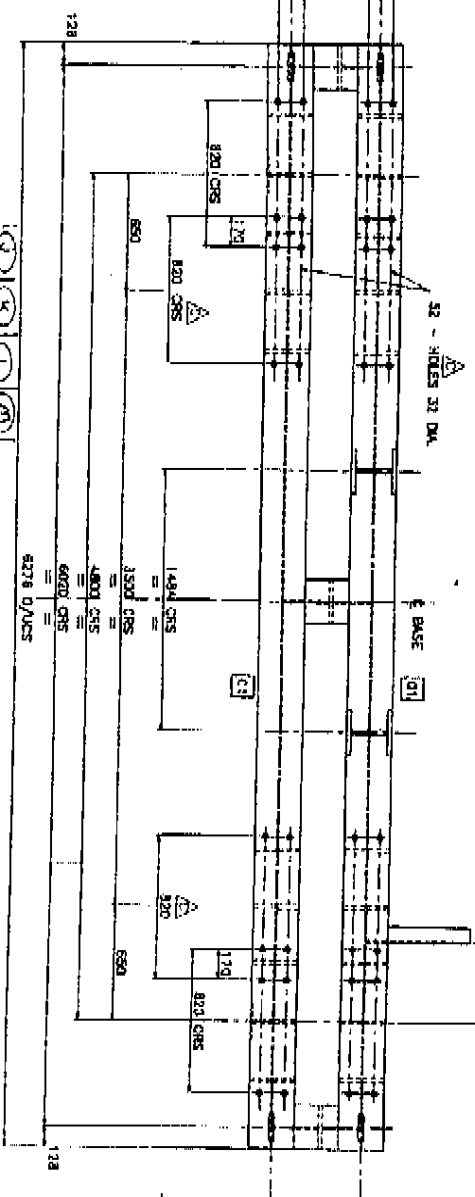


INDEX

- 1) "AS BUILT " DRAWINGS
- 2) NDT REPORTS
- 3) DIMENSIONAL REPORTS
- 4) PAINT REPORTS
- 5) LOAD TEST REPORT
- 6) MATERIAL TEST CERTIFICATES
C/W REGISTER
- 7) INSPECTION RELEASE CERTIFICATE
- 8) FABRICATION SPECIFICATION
- 9) QUALITY CONTROL PLAN
- 10) SUB CONTRACTOR QC PLANS
- 11) WELDER QUALIFICATION REGISTER
- 12) WELDING PROCEDURE REGISTER
- 13) WELDER INSTRUCTIONCARD
- 14) WELDER SURVEILLANCE SHEETS
- 15) NDT PROCEDURES
(MPI & UT)
- 16) NDT OPERATOR QUALIFICATIONS
- 17) LLOYDS APPROVED DESIGN CERTIFICATE



SE MACHINE LTD
AS BUILT
 SIGN *Wade* DATE 2/4/99

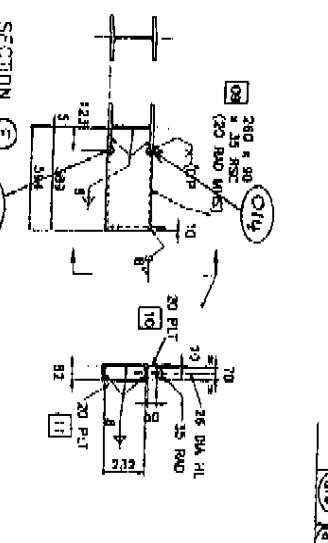
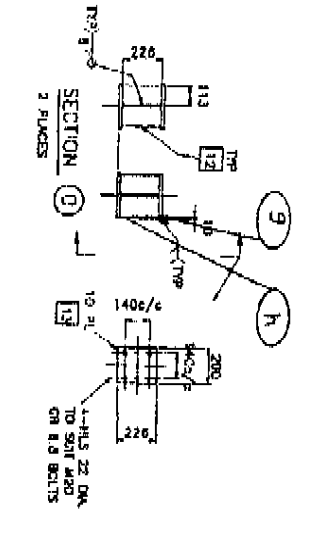
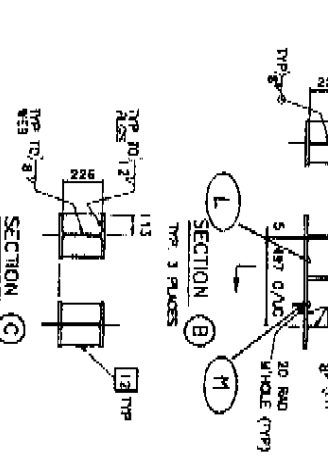


PLAN ON BASE BEAMS
 ONE - SET RECD AS DRAWN
 ONE - SET RECD OFF. HAND

1	2	3	4	5	6	7	8	9	10	11	12	13	14	15	16	17	18	19	20	21	22	23	24	25	26	27	28	29	30	31	32	33	34	35	36	37	38	39	40	41	42	43	44	45	46	47	48	49	50	51	52	53	54	55	56	57	58	59	60	61	62	63	64	65	66	67	68	69	70	71	72	73	74	75	76	77	78	79	80	81	82	83	84	85	86	87	88	89	90	91	92	93	94	95	96	97	98	99	100
---	---	---	---	---	---	---	---	---	----	----	----	----	----	----	----	----	----	----	----	----	----	----	----	----	----	----	----	----	----	----	----	----	----	----	----	----	----	----	----	----	----	----	----	----	----	----	----	----	----	----	----	----	----	----	----	----	----	----	----	----	----	----	----	----	----	----	----	----	----	----	----	----	----	----	----	----	----	----	----	----	----	----	----	----	----	----	----	----	----	----	----	----	----	----	----	----	----	----	-----

1	2	3	4	5	6	7	8	9	10	11	12	13	14	15	16	17	18	19	20	21	22	23	24	25	26	27	28	29	30	31	32	33	34	35	36	37	38	39	40	41	42	43	44	45	46	47	48	49	50	51	52	53	54	55	56	57	58	59	60	61	62	63	64	65	66	67	68	69	70	71	72	73	74	75	76	77	78	79	80	81	82	83	84	85	86	87	88	89	90	91	92	93	94	95	96	97	98	99	100
---	---	---	---	---	---	---	---	---	----	----	----	----	----	----	----	----	----	----	----	----	----	----	----	----	----	----	----	----	----	----	----	----	----	----	----	----	----	----	----	----	----	----	----	----	----	----	----	----	----	----	----	----	----	----	----	----	----	----	----	----	----	----	----	----	----	----	----	----	----	----	----	----	----	----	----	----	----	----	----	----	----	----	----	----	----	----	----	----	----	----	----	----	----	----	----	----	----	----	-----

NOTES
 ALL DIMS 25.4 x 25.4 x 89 UC U.N.D.
 ALL P.T'S 20 THK U.N.C.
 ALL MATERIAL TO EX 10 DEC 85SS
 NPT
 ALL WELDS VEGA. SECTION TO BS 5393
 FILE PER BS 208 VIT TO BS 3003
 LOCK WIT TO BS 8022
 FILLER WELDS TOE WPT TO BS 8022
 ALL FLUCTUATING PER BS 8022
 GENERAL FABRICATION TOLERANCES
 (UNLESS NOTED OTHERWISE)
 UNMACHINED MACHINED
 C TO 150 +/- 1.0 +/- 0.5
 OVER 151 TO 1000 +/- 2.0 +/- 1.0
 OVER 1000 +/- 3.0 +/- 1.5
 ANGLES +/- 0.50



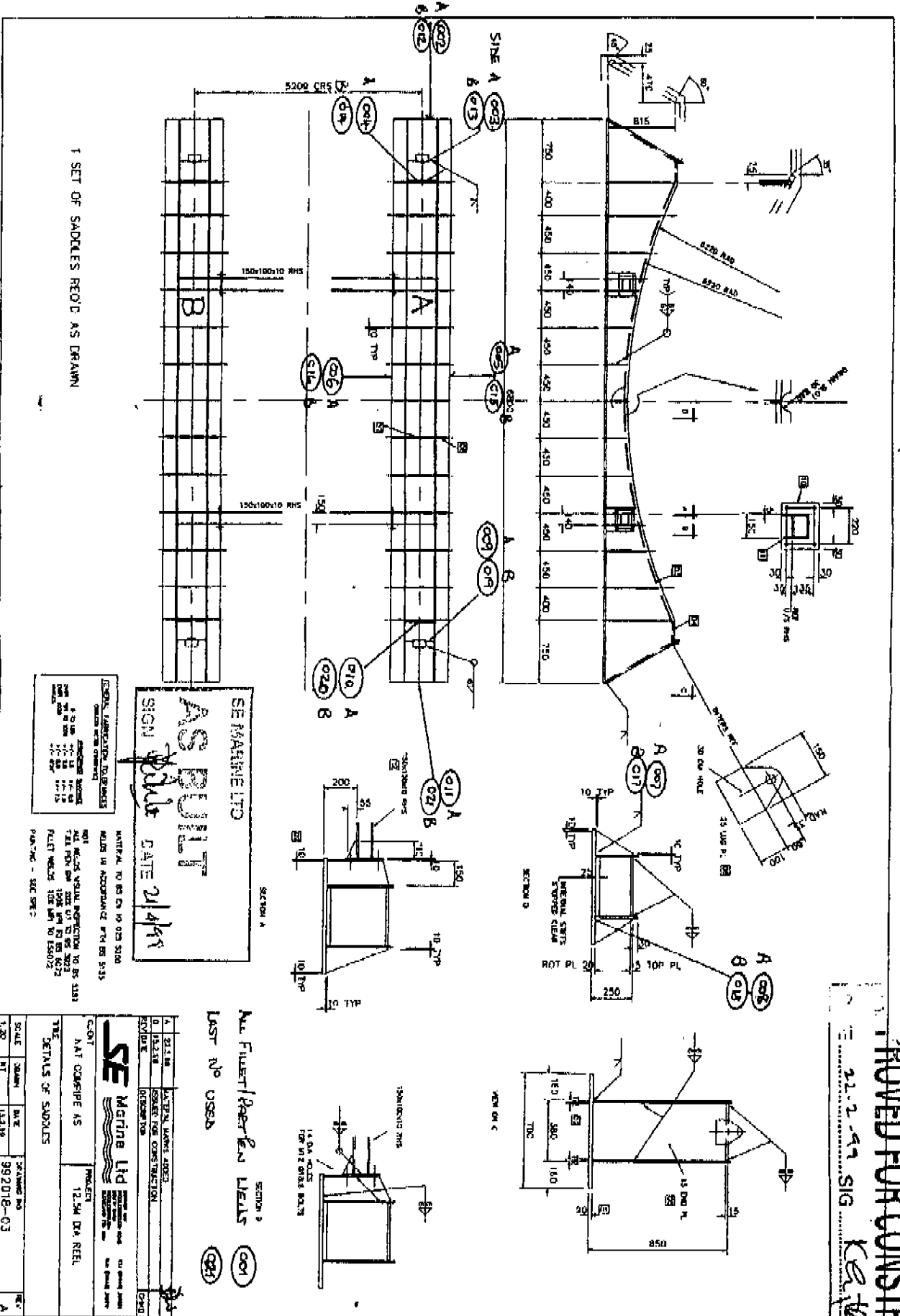
LAST VISA APPROVAL 029

NO.	DATE	BY	REVISION
1	08.03.98		ADDED 16 PLACES & 16 STRIPS ADDED TO SHIRT ELEMENTS TOOKERS
2	13.02.99		SEN. REQS. VAN WORKS APPROD
3	13.02.99		HOLES RELEASED
4	13.02.99		ISSUED FOR CONSTRUCTION
5			REVISION

SE Marine Ltd
 Marine Ltd
 PROJECT 12.5M DIA. PEEL

STATE	DATE	PROJECT NO	REV
1	13.02.99	992015 - 002	C

SIDE B



1 SET OF SADDLES RECD AS DRAWN

SEAFARME LTD
ASBUILT
 SIGN
 ASBUILT DATE 21/4/99

WATER TO BS ON 10 023 SIGN
 MADE IN ACCORDANCE WITH BS 5335

NOT BE USED WITHOUT PERMISSION TO BS 5335
 ALL METALS VISUAL INSPECTION TO BS 5335
 ALL METALS TO BE PAINTED TO BS 5335
 PAINTING - SEE SPEC

SCALE		DATE	BY	PROJECT NO	REV
1:20	1:20	13/1/99		992018-03	A

ALL FLUENT / ROOF / EAVES DETAILS
 LAST NO USED
 (001) (002)

APPROVED FOR CONSTRUCTION
 21-2-99 SIG
 K. E. H.