



Postbus 17
 7480 AA Haaksbergen
 E-mail: ihb@ihbinternational.nl
 Web: www.ihbinternational.nl

Tel. + 31 (0)53 57 431 43
 Mob. + 31 (0)63 01 548 26
 Fax + 31 (0)84 87 266 72

BTW nr. 1014.51.556.B.02

Electric driven centrifugal gas compressor.

€	-	prijs per stuk / each			
On request		totaalprijs / total amount		prijs / price	
Code 7019				excl.	TRANSPORT / BTW / VAT/as is where is
Omschrijving/description		CAT A	NH		

We have a Electrical driven centrifugal gas compressor available for immediate supply. This compressor is originally built by DELAVAL-STORK (now SIEMENS) on behalf of a mayor Oil and Gas Operator.

YOM 1990

Complete Documentation is available

General Information is attached





Postbus 17
7480 AA Haaksbergen
E-mail: ihb@ihbinternational.nl
Web: www.ihbinternational.nl

Tel. + 31 (0)53 57 431 43
Mob. + 31 (0)63 01 548 26
Fax + 31 (0)84 87 266 72

BTW nr. 1014.51.556.B.02



Industriële Handels Bemiddeling voor o.a.:

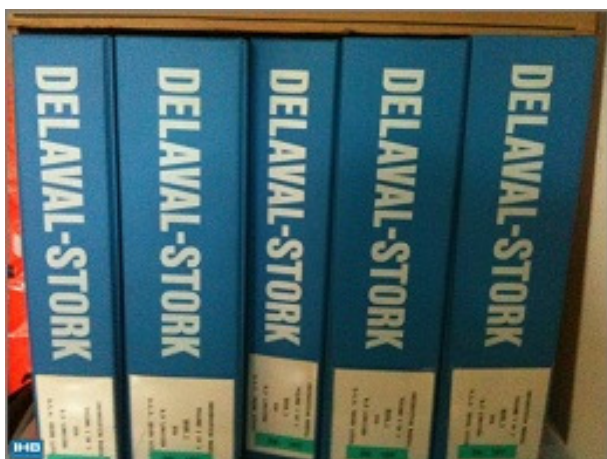
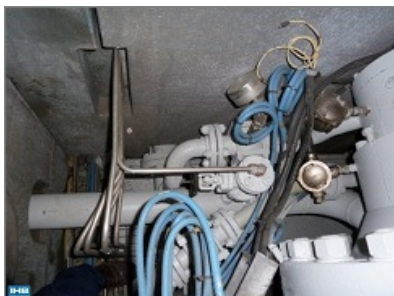
Machines • Incurante voorraden • Magazijninventarissen • Kantoorinventarissen • Fabrieksinrichtingen • Bouwmaterialen • Grondstoffen • Etc.



Postbus 17
7480 AA Haaksbergen
E-mail: ihb@ihbinternational.nl
Web: www.ihbinternational.nl

Tel. + 31 (0)53 57 431 43
Mob. + 31 (0)63 01 548 26
Fax + 31 (0)84 87 266 72

BTW nr. 1014.51.556.B.02



Industriële Handels Bemiddeling voor o.a.:

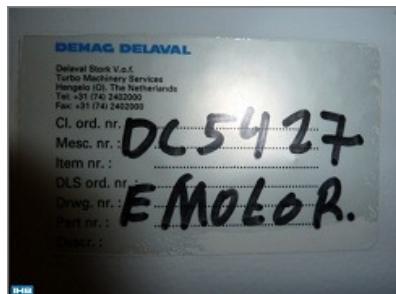
Machines • Incurante voorraden • Magazijninventarissen • Kantoorinventarissen • Fabrieksinrichtingen • Bouwmaterialen • Grondstoffen • Etc.



Postbus 17
7480 AA Haaksbergen
E-mail: ihb@ihbinternational.nl
Web: www.ihbinternational.nl

Tel. + 31 (0)53 57 431 43
Mob. + 31 (0)63 01 548 26
Fax + 31 (0)84 87 266 72

BTW nr. 1014.51.556.B.02





Postbus 17
7480 AA Haaksbergen
E-mail: ihb@ihbinternational.nl
Web: www.ihbinternational.nl

Tel. + 31 (0)53 57 431 43
Mob. + 31 (0)63 01 548 26
Fax + 31 (0)84 87 266 72

BTW nr. 1014.51.556.B.02

DELAVAL-STORK

GENERAL INFORMATION

SECTION 1 - GENERAL INFORMATION

EQUIPMENT FURNISHED	GI - 2
DESIGN DATA	GI - 2
Compressor	GI - 2
Electric motor	GI - 3
Gearbox	GI - 3
Couplings	GI - 3
GAS DETECTION AND FIRE FIGHTING SYSTEM	GI - 4

WPLC0581

GI - 1



Postbus 17
7480 AA Haaksbergen
E-mail: ihb@ihbinternational.nl
Web: www.ihbinternational.nl

Tel. + 31 (0)53 57 431 43
Mob. + 31 (0)63 01 548 26
Fax + 31 (0)84 87 266 72

BTW nr. 1014.51.556.B.02

DELAVAL-STORK

GENERAL INFORMATION

GENERAL INFORMATION

EQUIPMENT FURNISHED - The equipment furnished consists of a Delaval - Stork centrifugal compressor driven by a Laurent Scott electric motor via a GEC gearbox.
The components are mounted on a fabricated bedplate.
Compressor, gearbox and electric motor are connected to each other by means of flexible diaphragm couplings.
The unit is equipped with a lube oil system and accessories necessary for a safe and efficient operation. The general arrangement of the major components can be seen on the general arrangement drawing C058110A000.

DESIGN DATA

Compressor

Manufacturer	Delaval - Stork
Type	5B22
Speed, RPM	12496
Inlet volume, m ³ /h	1030
Inlet temperature, °C	16.6
Absolute inlet pressure, bar	38.57
Discharge temperature , °C	93
Absolute discharge pressure, bar	81.01
Power, kW (All losses included excl. gear losses)	1439
Medium handled	Natural gas
Rotation (seen from driver to compressor)	CCW

WPLC0581

GI - 2



Postbus 17
7480 AA Haaksbergen
E-mail: ihb@ihbinternational.nl
Web: www.ihbinternational.nl

Tel. + 31 (0)53 57 431 43
Mob. + 31 (0)63 01 548 26
Fax + 31 (0)84 87 266 72

BTW nr. 1014.51.556.B.02

DELAVAL-STORK	GENERAL INFORMATION
<u>Electric motor</u>	
Manufacturer	Laurens Scott
Type	560 / 1 - 2W19 / 33TUU02EXK
Power kW	1850
Speed, rpm	2975
Voltage, V.....	10000
Frequency, Hz	50
<u>Gearbox</u>	
Manufacturer	G. E. C.
Type	HSG315H
Input speed, rpm	2975
Output speed, rpm	12496
Power, kW	1850
Ratio	4.2
<u>Coupling between compressor and gearbox</u>	
The compressor shaft is connected to the gearbox shaft by a Flexibox diaphragm coupling type TSGS-0380-0533.	
<u>Coupling between el. Motor and gearbox</u>	
The gearbox shaft is connected to the electric motor shaft by a Flexibox diaphragm coupling type TSJW-1000-w533.	
The coupling hubs on the compressor shaft, on the gearbox shafts and on the electric motor shafts are designed to be installed and removed with the help of hydraulic tools. The use of these tools will be described in the maintenance section of this book. The couplings do not need lubrication.	
WPLC0581	GI - 3



Postbus 17
7480 AA Haaksbergen
E-mail: ihb@ihbinternational.nl
Web: www.ihbinternational.nl

Tel. + 31 (0)53 57 431 43
Mob. + 31 (0)63 01 548 26
Fax + 31 (0)84 87 266 72

BTW nr. 1014.51.556.B.02

DELAVAL-STORK

GENERAL INFORMATION

GAS DETECTION AND FIRE FIGHTING SYSTEM

Inside the noise hood, a gas warning and fire detection/fighting systems has been installed. This system consists essentially of gas- and fire detectors, transmitters, solenoid valve, switches, cylinders containing Halon 1301 and necessary pipes.

When the detector registers an alarm situation, the solenoid valve will be opened by an electrical signal and Halon will be admitted into the noise hood and combustion will be stopped in an few seconds.

Through this the development of a major fire will be prevented.

For detailed information about the components of this system see the SAVAL-KRONENBURG manual in volume 2.

WPLC0581

GI - 4