

Transformator / Transformer / Transformator 36 MVA /33 kV

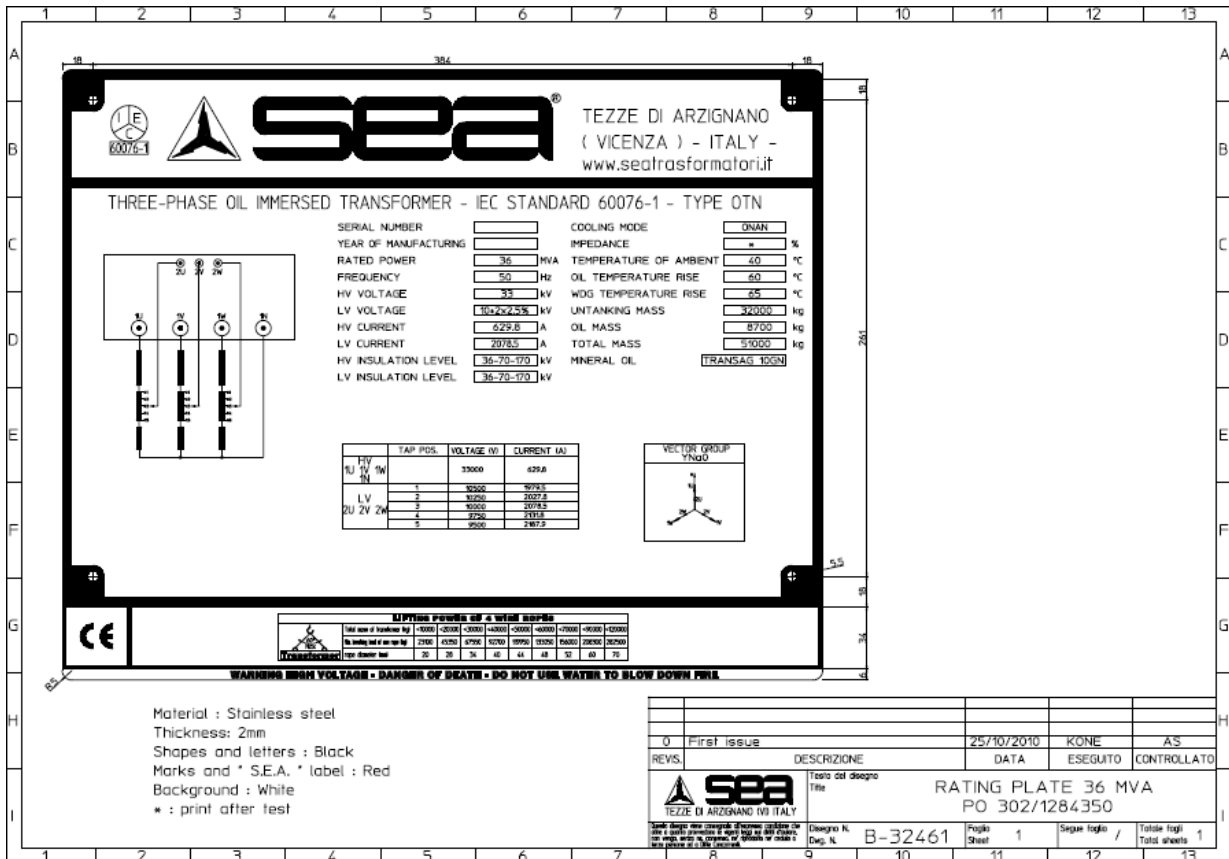
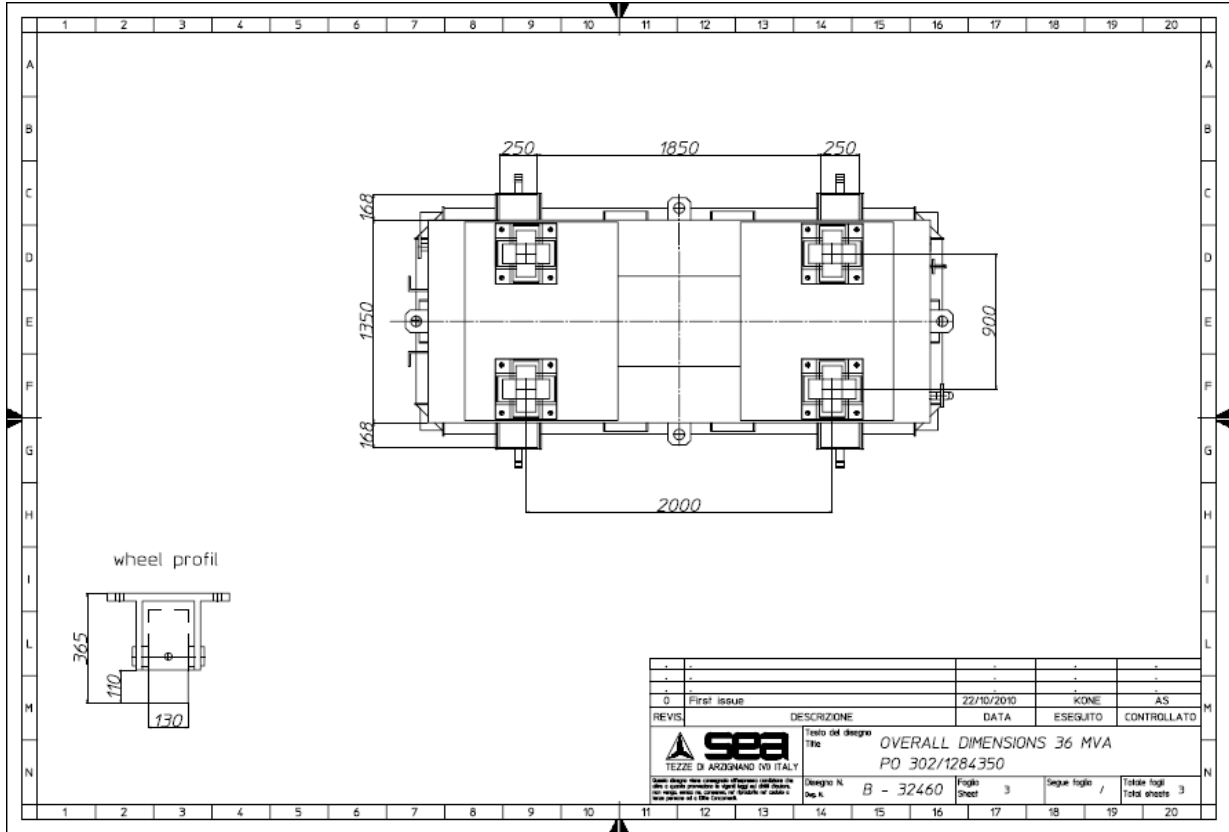
€	-	prijs per stuk / each			
On request		totaalprijs / total amount		prijs / price	
Code 7018				excl.	TRANSPORT / BTW / VAT/as is where is
Omschrijving/description	CAT A	OV			

We hebben deze Transformator beschikbaar, opgeslagen in Nederland en klaar voor verzending. De transformator is slechts éénmalig gebruikt in proefopstelling.

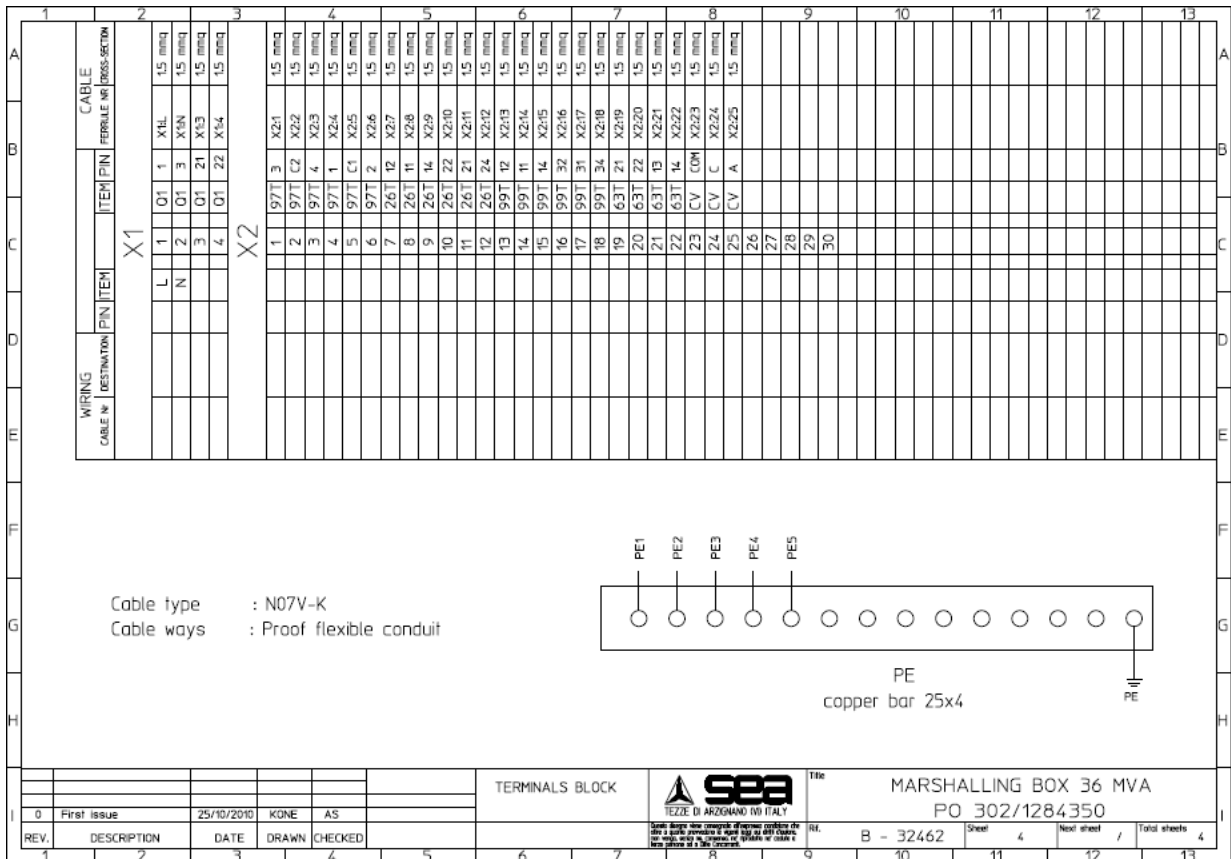
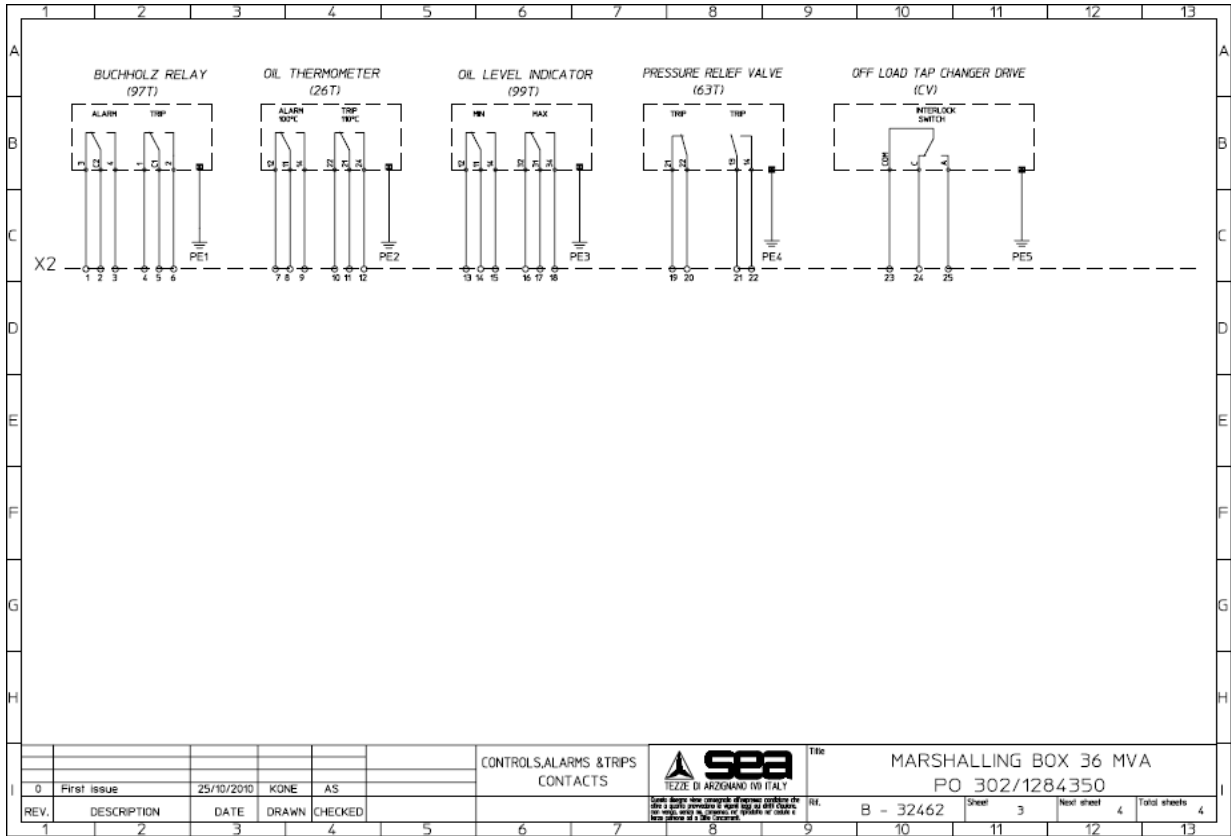
We have this Transformer available, stored in the Netherlands and ready for shipment. The transformer was only used once in a testbed.

Wir haben diesen Transformator verfügbar, gelagert in den Niederlanden und versandsbereit. Der Transformator ist nur einmalig betrieben in einen Prüfstand.





Material : Stainless steel
Thickness: 2mm
Shapes and letters : Black
Marks and * S.E.A. * label : Red
Background : White
* : print after test





Postbus 17
7480 AA Haaksbergen
E-mail: ihb@ihbinternational.nl
Web: www.ihbinternational.nl

Tel. + 31 (0)53 57 431 43
Mob. + 31 (0)63 01 548 26
Fax + 31 (0)84 87 266 72

BTW nr. 1014.51.556.B.02

2. Technical Data for autotransformer

2.1 Main guaranteed data

type of transformer:		three phase
number of windings:		1
cooling:		ONAN
frequency:	Hz	50
Ambient temperature (min/max):	°C	-10/+40

Altitude installation:	m	1000 max
Rated power:	MVA	36
Primary voltage:	kV	10±2x2,5%
Secondary at no load:	kV	33
Connection of windings:	Star+N Connection group: YNa0	
Insulation level:	kV	36/70/170
No load losses at rated ratio: W		24000
No load current at Vn: %		0,8
Short circuit losses at 75°C, 36 MVA	W	80000
Short circuit voltage at 36 MVA	%	≈1,3÷1,7
Top oil temperature rise: °C		60
Average windings temperature rise:	°C	65
Sound pressure level Lpa at 0,3 m ONAN:	dB(A)	65
Design core flux density: T		1,6 max
Max allowed fault current at supply 10 kV net	kA	22 (RMS for 1s)

2.2 Dimensions and weights (in operation)

length:	mm	5500
width (without cable boxes):	mm	2900
Width (with cable boxes):	mm	4000
Height (without cable boxes):	mm	4400
Height (with cable boxes):	mm	5000
oil weight:	kg	8500
total weight (without cable boxes):	kg	50000
total weight (with cable boxes):	kg	52000

2.3 Dimensions and weights (for transportation)

length:	mm	5500
width:	mm	2900
height:	mm	4000
weight (heaviest part):	kg	49000

2.4 Main Electrical datas

INCOMING VOLTAGE [kV]	SECONDARY SIDE [kV]	IMPEDANCE [%]	Tollerances of impedance
10500	32790	1,75	±15%
10250	32580	--	±15%
10000	32963	1,65	±15%
9750	32745	--	±15%
9500	33157	1,58	±15%